



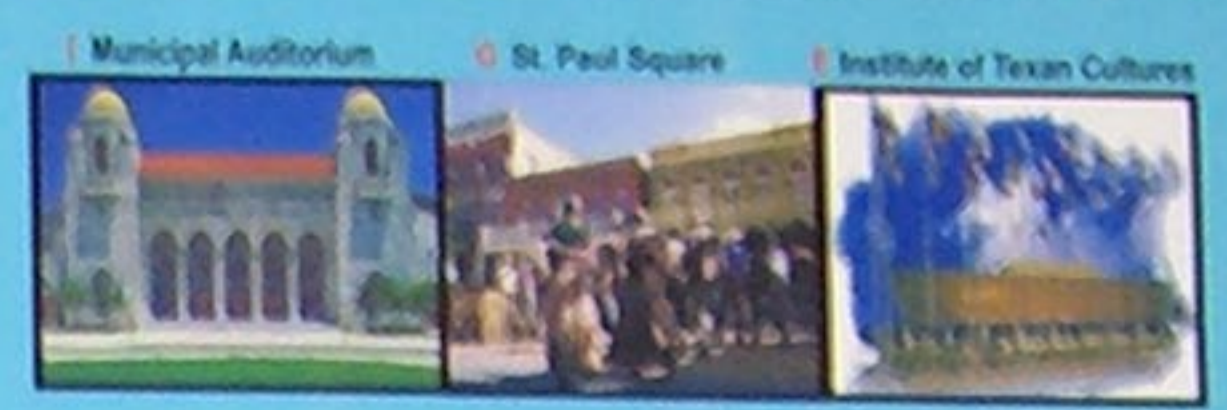
Downtown San Antonio



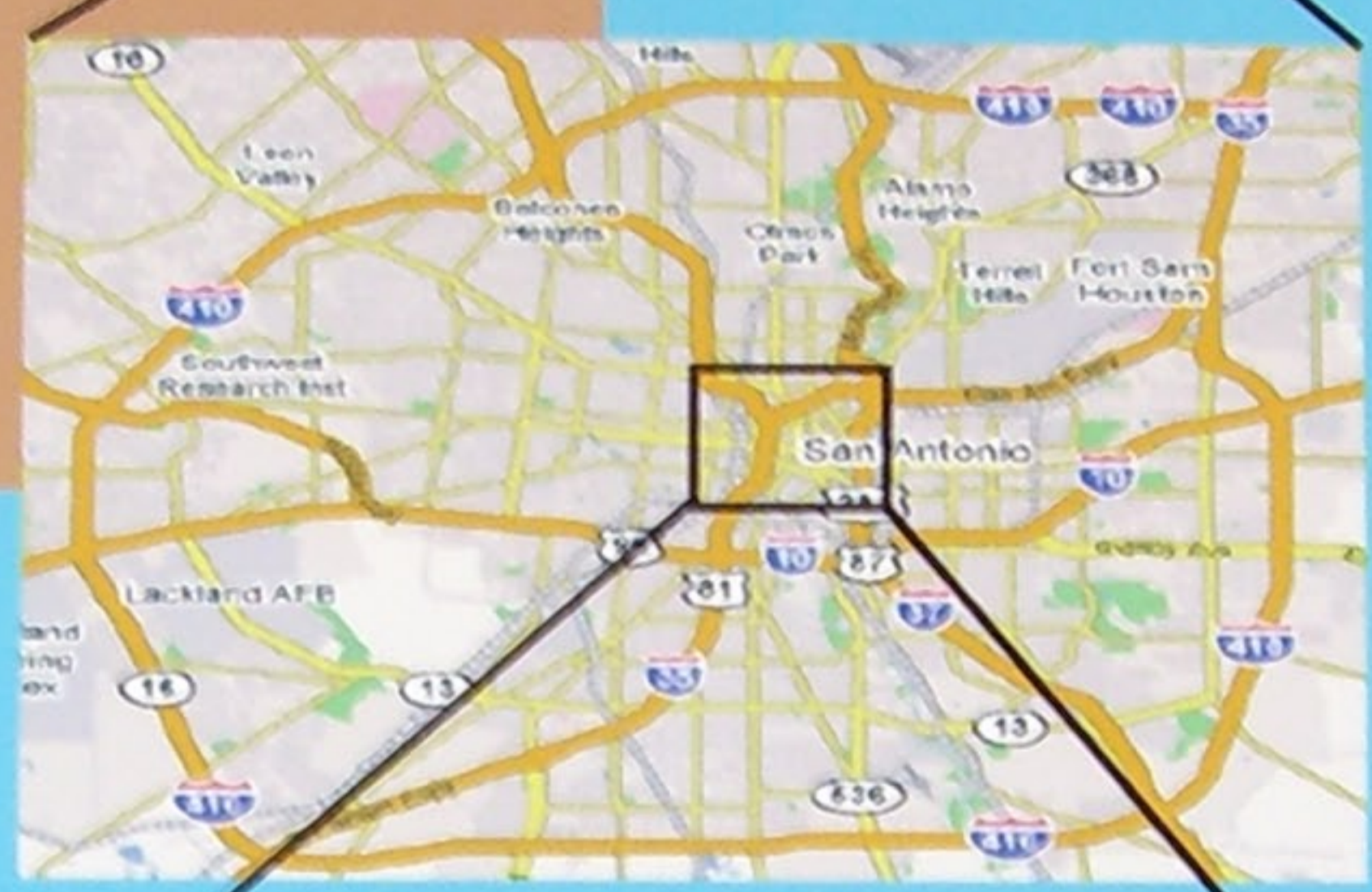
San Antonio Population By Census Place



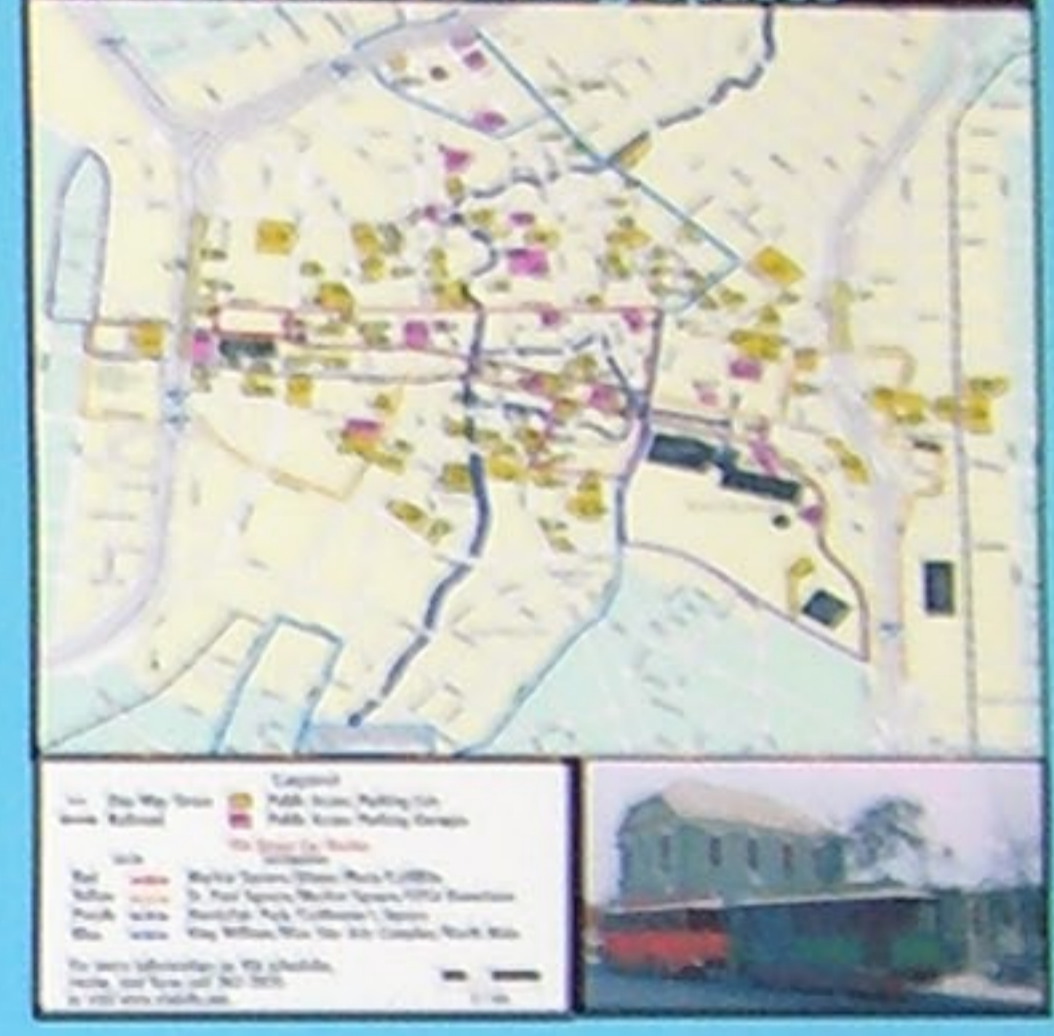
"San Antonio captures the spirit of Texas. Now the eighth largest city in the United States, the city has retained its sense of history and tradition, while carefully blending in cosmopolitan progress. The city has always been a crossroads and a meeting



San Antonio Median Family Income by Census Place



Downtown Public Parking - 25 Total Parking Lots - 7990 Total Parking Spaces

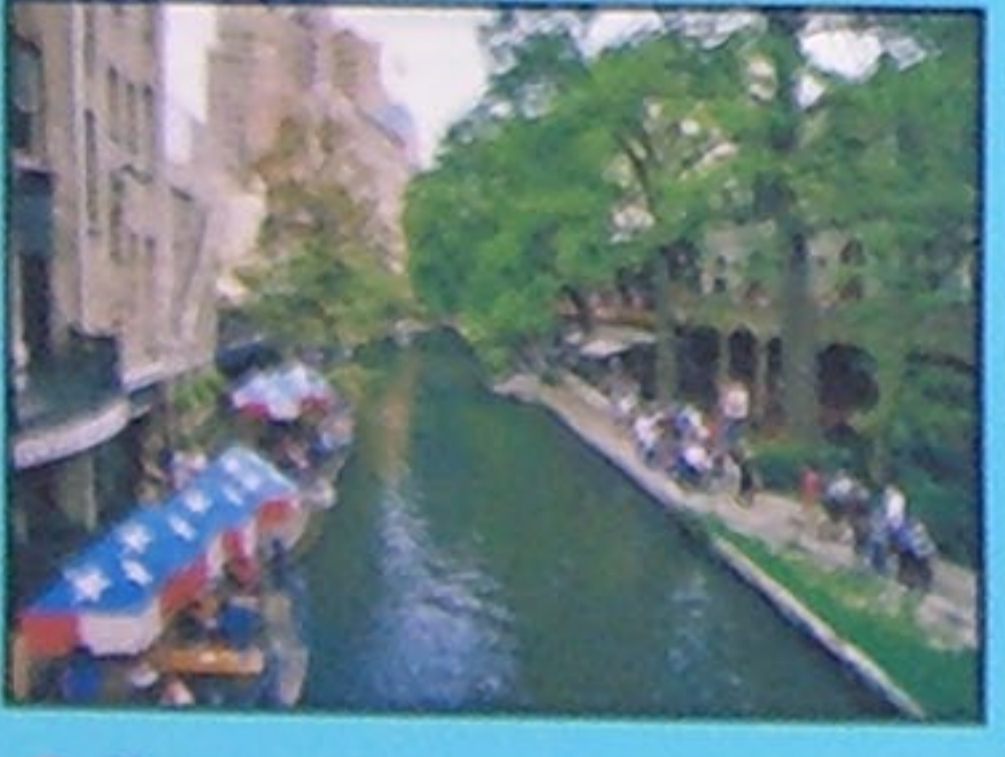


A Market Square



Downtown Boundaries:
N: I-35 E: Monumental Ave
S: Alamo/Lone Star Aves
W: Colorado St.

B San Antonio Riverwalk



C Convention Center

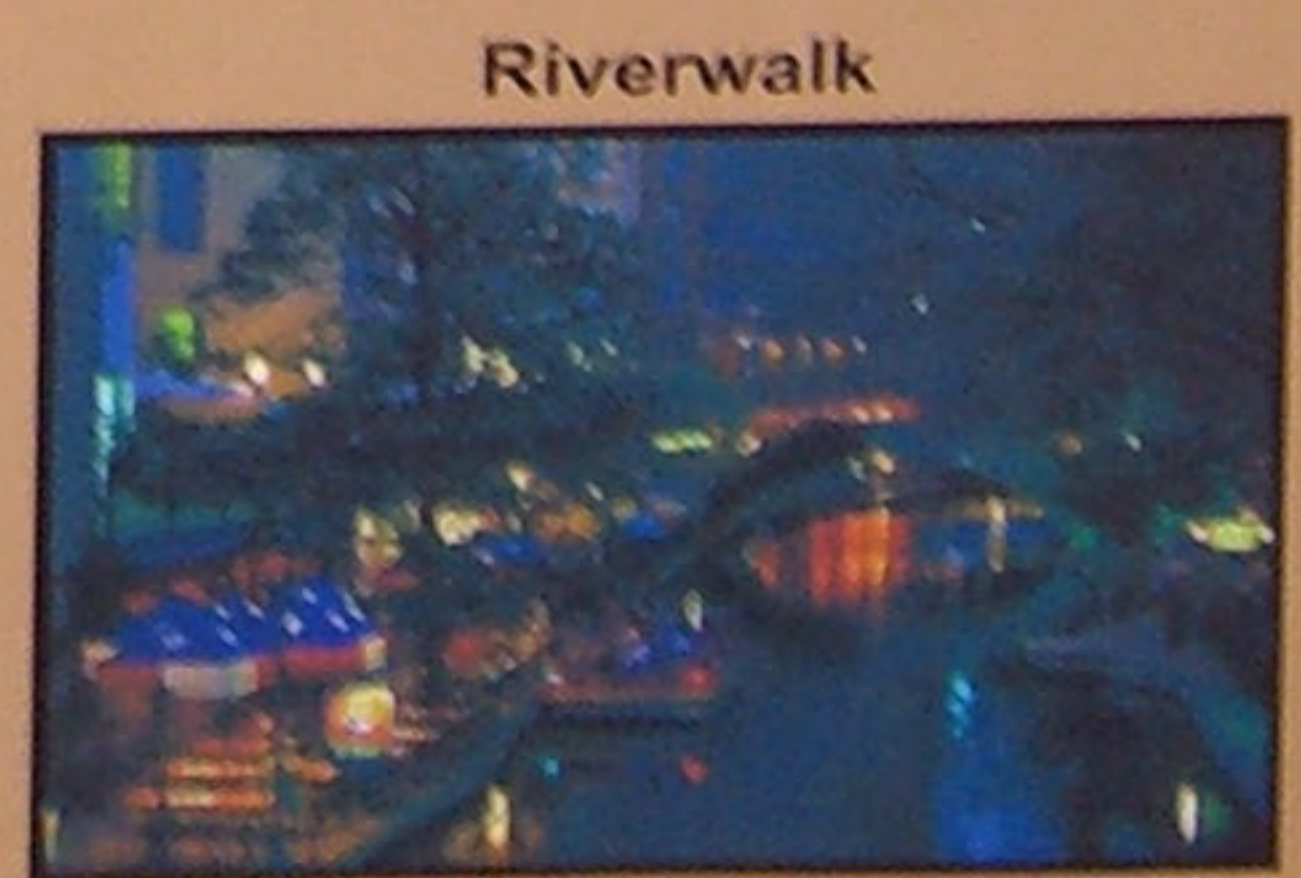


Downtown Census Data

- Total population 17,793
 - > Average Age 35
 - > Median Income \$18,108
 - > Median Family Income \$25,204
- Total Land Area 2,480 Acres
 - > Housing Units 5,524
 - > Averaging Household Size 2.4
 - > Residential Vacancy Rate 12.8%
- Total Retail Establishments 3,825*
 - > Total Sales 2002 = \$13,828,317
 - > Total Employees 62,196

Take Home Points:

- 1) Utilize river in commercial and retail development
- 2) New Toyota Plant in region is stimulating middle income growth



D Tower of the Americas and Hemisfair Park



F Alamo Dome



H Alamo

